

BENJAMIN®

EXPLODED VIEW
& PARTSLIST

Benjamin Discovery



**Dual Fuel Compressed
Air / CO2 Air Rifle
Models: BP1K77xx
and BP9M22xx**



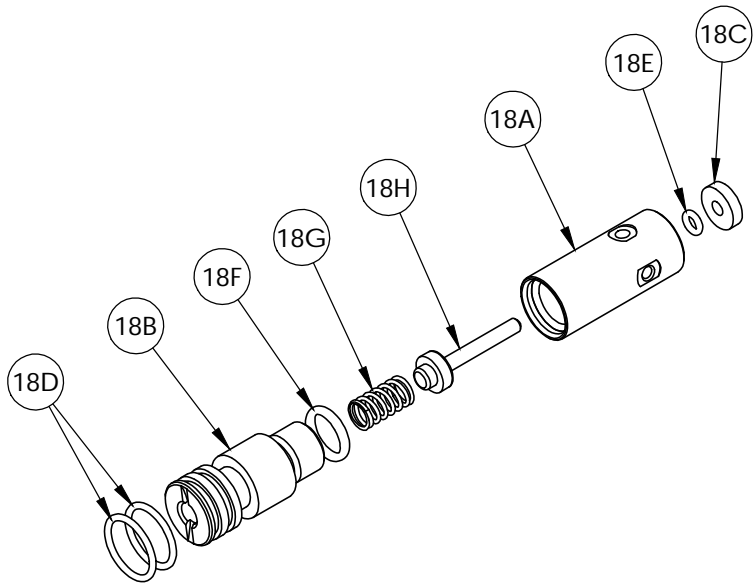
CROSMAN CORPORATION
RT 5 & 20
EAST BLOOMFIELD, NY 14443
Phone: 1-800-724-7486
Parts Order Fax: 585-657-5405
www.crosman.com

See next page

See next page

See next page

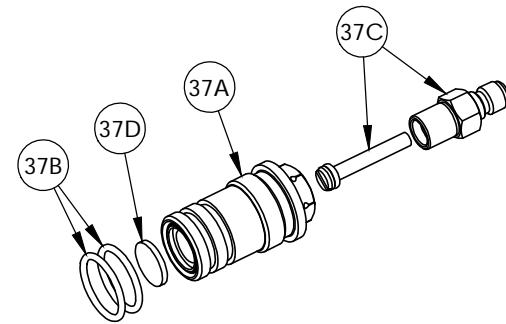
See next page



ITEM 18, VALVE ASSEMBLY

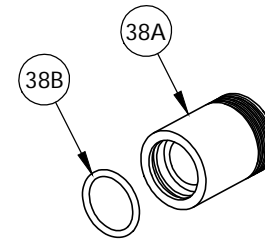
ITEM NO.	PART NUMBER	DESCRIPTION	QTY.
18A	1761-002	VALVE BODY	1
18B	1761-003	VALVE CAP	1
18C	1761-004	RETAINING COLLAR	1
18D	1761-005	O-RING, AS568-016	2
18E	CAK-008	O-RING	1
18F	130-035	O-RING	1
18G	788-061	SPRING, VALVE	1
18H	1761-140	VALVE STEM, OVERMOLDED	1

MODEL NOS.
BP1K77xx
BP9M22xx



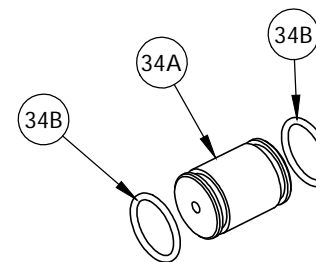
ITEM 37, FILL ADAPTER

ITEM NO.	PART NUMBER	DESCRIPTION	QTY.
37A	1761-006	HOUSING, ADAPTER	1
37B	1761-005	O-RING, AS568-016	2
37C	1761-106	NIPPLE, ADAPTER	1
37D	NS1200-047	SINTERED FILTER	1



ITEM 38, CAP ASSEMBLY

ITEM NO.	PART NUMBER	DESCRIPTION	QTY.
38A	1761-011	CAP, ADAPTER	1
38B	1761-005	O-RING, AS568-016	1



ITEM 34, GAUGE PORT

ITEM NO.	PART NUMBER	DESCRIPTION	QTY.
34A	1761-016	PORT, GAUGE	1
34B	1761-005	O-RING, AS568-016	2